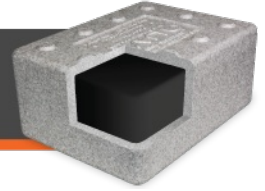


# NUVO™ ELITE FORMULATION D



Nuvo Elite Formulation D is a next generation hot applied polymer modified asphalt crack sealant. This sealant applies and sets up best in up to very hot temperatures, and is highly durable in cold to very hot climates. With advanced performance provided by Intelibond Technology, Nuvo Elite Formulation D is self leveling, fast setting, quick melting, extremely flexible and moderately stiff for parking lot applications. Formulated with a low viscosity for maximum crack penetration, it is ideal for highways, county roads, municipal streets, parking lots, airports and pathways. Nuvo Elite Formulation D is the premium choice for your pavement maintenance.

## SPECIFICATION

<b>CONE PENETRATION</b> : 77°F (25°C) : ASTM D 5329	30 dmm max
<b>SOFTENING POINT</b> : ASTM D 36	210°F (99°C) min
<b>FLEXIBILITY</b> : 1 in (25mm) mandrel, 90 deg bend, 2s : ASTM D 3111	Pass 15°F (-9°C)
<b>DUCTILITY</b> : 77°F (25°C) : ASTM D 113	45 cm min.
<b>FLOW</b> : 140°F (60°C) : ASTM D 5329	1 mm max
<b>RESILIENCE</b> : 77°F (25°C) : ASTM D 5329	30% min

## APPLICATION

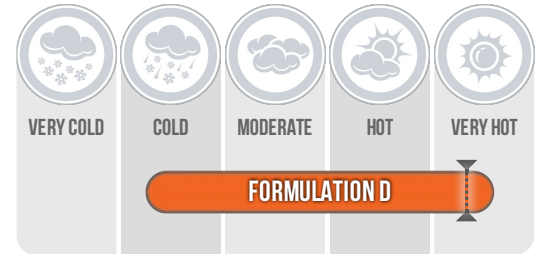
Read and follow application instructions before use. This product may be heated using a direct fired kettle or indirect heating methods, either a double boiler or hot oil circulating kettle. Equipment must have means of maintaining constant agitation to the material.

Maximum safe heating temperature: 400°F (204°C).

Recommended application temperature: 380°F (193°C).

## WARRANTY

Warranty: Maxwell Products, Inc. warrants that our products meet the applicable specifications at the time of shipment. Due to the many differing procedures used in preparing and installing materials, Maxwell Products assumes no liability for material failure due to improper installation, equipment failure or operator errors. Any remedies are limited, at Maxwell Products' option, to replacement of materials or refund (full or partial) of the purchase price from Maxwell Products. Claims must be made within three (3) months of the date of purchase. There is no other warranty either expressed or implied.



● Performance Range

⌵ Suggested Max. Application Temp

Available in:

**PolySkin**  
Inclusive packaging

Formulated with:

**inteliBond™**  
TECHNOLOGY

**SPECIAL**  
ASPHALT PRODUCTS  
*Sustainable Pavement Solutions*

[www.specialasphalt.com](http://www.specialasphalt.com)

**PORTLAND, OR**  
3537 NW St. Helens Rd.  
Portland, OR 97210-1313  
Phone: 503-295-6490  
Fax: 503-295-2901

**MEDFORD, OR**  
5758 Crater Lake Ave  
Central Point, OR 97502  
Phone: 800-953-6490  
Fax: 503-295-2901

**SPOKANE, WA**  
3117 E. Everett Ave.  
Spokane, WA 99217-6617  
Phone: 509-489-5353  
Fax: 509-489-5408

**SEATTLE, WA**  
9243 M.L. King Jr. Way S.  
Seattle, WA 98118-5314  
Phone: 206-722-1413  
Fax: 206-725-8626