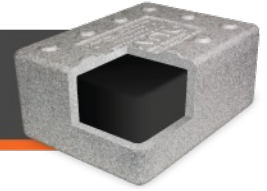


NUVO™ CS FORMULATION A



Nuvo CS Formulation A is a next generation hot applied polymer modified asphalt crack sealant. This sealant applies and sets up best in up to moderate temperatures, and is highly durable in cold to hot climates. With advanced performance provided by Intelibond Technology, Nuvo CS Formulation A is self leveling, fast setting, quick melting and extremely flexible. Formulated with a medium viscosity for all-round ease of application, it is ideal for highways, county roads, municipal streets, parking lots, airports and pathways. Nuvo CS Formulation A delivers high performance at a moderate cost.

SPECIFICATION

CONE PENETRATION : 77°F (25°C) : ASTM D 5329	90 dmm max
SOFTENING POINT : ASTM D 36	195°F (91°C) min
FLEXIBILITY : 1 in (25mm) mandrel, 90 deg bend, 2s : ASTM D 3111	Pass -20°F (-29°C)
DUCTILITY : 77°F (25°C) : ASTM D 113	40 cm min
FLOW : 140°F (60°C) : ASTM D 5329	5 mm max
RESILIENCE : 77°F (25°C) : ASTM D 5329	40% min

APPLICATION

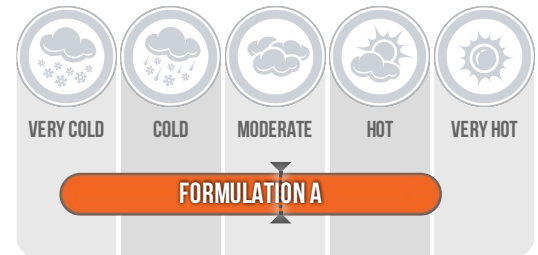
Read and follow application instructions before use. This product must be heated using indirect heating methods, either a double boiler or hot oil circulating kettle. Equipment must have means of maintaining constant agitation to the material.

Maximum safe heating temperature: 400°F (204°C).

Recommended application temperature: 380°F (193°C).

WARRANTY

Warranty: Maxwell Products, Inc. warrants that our products meet the applicable specifications at the time of shipment. Due to the many differing procedures used in preparing and installing materials, Maxwell Products assumes no liability for material failure due to improper installation, equipment failure or operator errors. Any remedies are limited, at Maxwell Products' option, to replacement of materials or refund (full or partial) of the purchase price from Maxwell Products. Claims must be made within three (3) months of the date of purchase. There is no other warranty either expressed or implied.



● Performance Range

⚡ Suggested Max. Application Temp

Available in:

PolySkin
Inclusive packaging

Formulated with:

inteliBond™
TECHNOLOGY

SPECIAL
ASPHALT PRODUCTS
Sustainable Pavement Solutions

www.specialasphalt.com

PORTLAND, OR
3537 NW St. Helens Rd.
Portland, OR 97210-1313
Phone: 503-295-6490
Fax: 503-295-2901

MEDFORD, OR
5758 Crater Lake Ave
Central Point, OR 97502
Phone: 800-953-6490
Fax: 503-295-2901

SPOKANE, WA
3117 E. Everett Ave.
Spokane, WA 99217-6617
Phone: 509-489-5353
Fax: 509-489-5408

SEATTLE, WA
9243 M.L. King Jr. Way S.
Seattle, WA 98118-5314
Phone: 206-722-1413
Fax: 206-725-8626