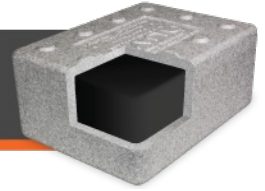


# NUVO™ CS FORMULATION D



Nuvo CS Formulation D is a next generation hot applied polymer modified asphalt crack sealant. This sealant applies and sets up best in up to very hot temperatures, and is highly durable in moderate to very hot climates. With advanced performance provided by Intelibond Technology, Nuvo CS Formulation D is self leveling, fast setting and moderately stiff for parking lot applications. Formulated with a medium viscosity for all-round ease of application, it is ideal for highways, county roads, municipal streets, parking lots, airports and pathways. Nuvo CS Formulation D delivers high performance at a moderate cost.

## SPECIFICATION

<b>CONE PENETRATION</b> : 77°F (25°C) : ASTM D 5329	35 dmm max
<b>SOFTENING POINT</b> : ASTM D 36	210°F (99°C) min
<b>FLEXIBILITY</b> : 1 in (25mm) mandrel, 90 deg bend, 2s : ASTM D 3111	Pass 30°F (-1°C)
<b>DUCTILITY</b> : 77°F (25°C) : ASTM D 113	40 cm min
<b>FLOW</b> : 140°F (60°C) : ASTM D 5329	3 mm max
<b>RESILIENCE</b> : 77°F (25°C) : ASTM D 5329	30% min

## APPLICATION

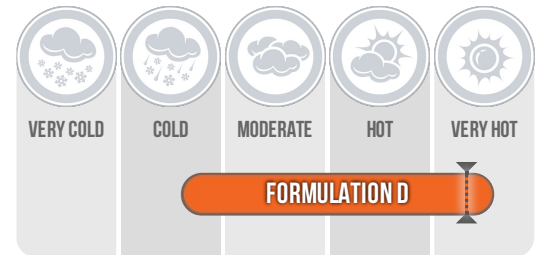
Read and follow application instructions before use. This product must be heated using indirect heating methods, either a double boiler or hot oil circulating kettle. Equipment must have means of maintaining constant agitation to the material.

Maximum safe heating temperature: 400°F (204°C).

Recommended application temperature: 380°F (193°C).

## WARRANTY

Warranty: Maxwell Products, Inc. warrants that our products meet the applicable specifications at the time of shipment. Due to the many differing procedures used in preparing and installing materials, Maxwell Products assumes no liability for material failure due to improper installation, equipment failure or operator errors. Any remedies are limited, at Maxwell Products' option, to replacement of materials or refund (full or partial) of the purchase price from Maxwell Products. Claims must be made within three (3) months of the date of purchase. There is no other warranty either expressed or implied.



● Performance Range

⚡ Suggested Max. Application Temp

Available in:

**PolySkin**  
Inclusive packaging

Formulated with:

**inteliBond™**  
TECHNOLOGY

**SPECIAL ASPHALT PRODUCTS**  
*Sustainable Pavement Solutions*

[www.specialasphalt.com](http://www.specialasphalt.com)

**PORTLAND, OR**  
3537 NW St. Helens Rd.  
Portland, OR 97210-1313  
Phone: 503-295-6490  
Fax: 503-295-2901

**MEDFORD, OR**  
5758 Crater Lake Ave  
Central Point, OR 97502  
Phone: 800-953-6490  
Fax: 503-295-2901

**SPOKANE, WA**  
3117 E. Everett Ave.  
Spokane, WA 99217-6617  
Phone: 509-489-5353  
Fax: 509-489-5408

**SEATTLE, WA**  
9243 M.L. King Jr. Way S.  
Seattle, WA 98118-5314  
Phone: 206-722-1413  
Fax: 206-725-8626